

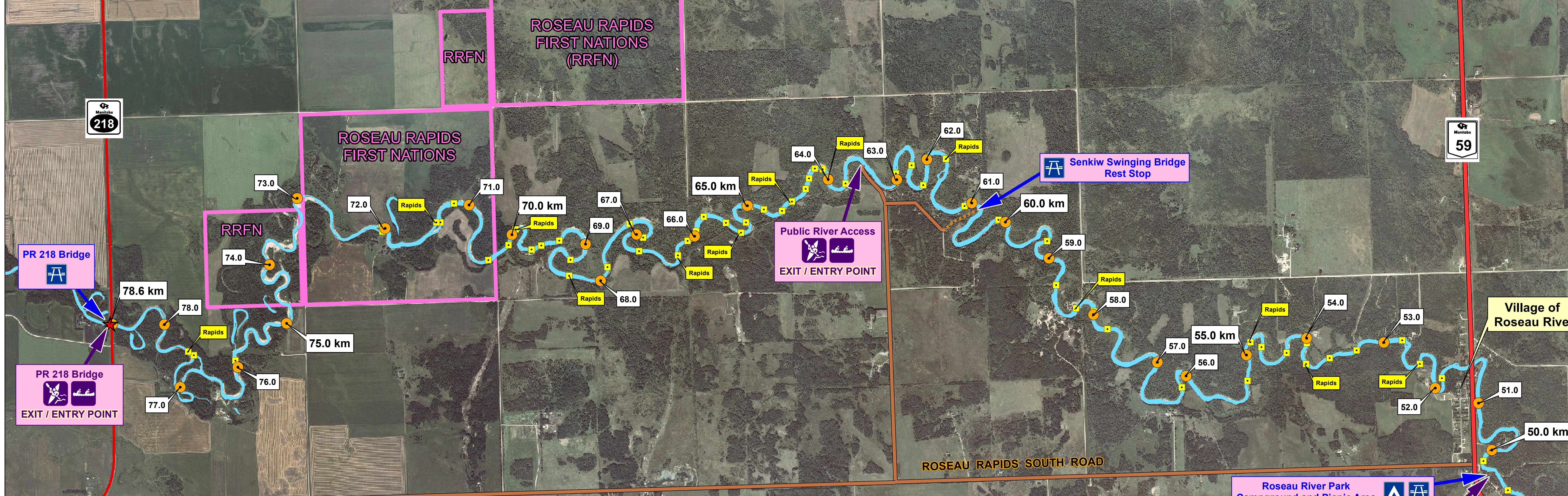


# MUNICIPALITY of EMERSON-FRANKLIN

## ROSEAU RIVER CANOE - KAYAK - TUBING MAP

ROSEAU RIVER PARK TO PR 218

[www.emersonfranklin.com](http://www.emersonfranklin.com)



**■ RAPIDS**

65+ Rapids between KM 12 and KM 39.6

Approx. 125 ft. (38 m) drop in elevation over 27.1 km  
from Village of Roseau River to PR 218 [4.6 ft./km]